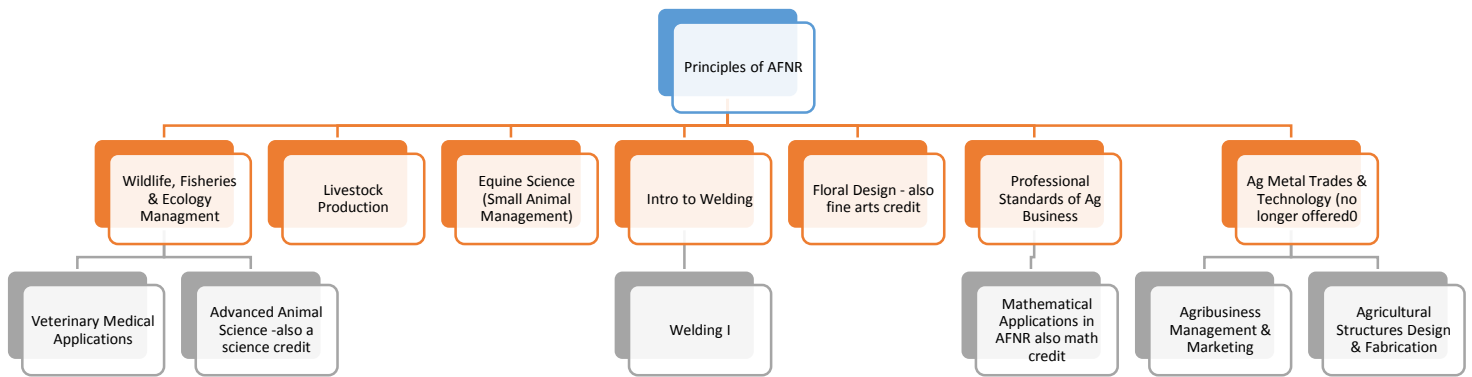
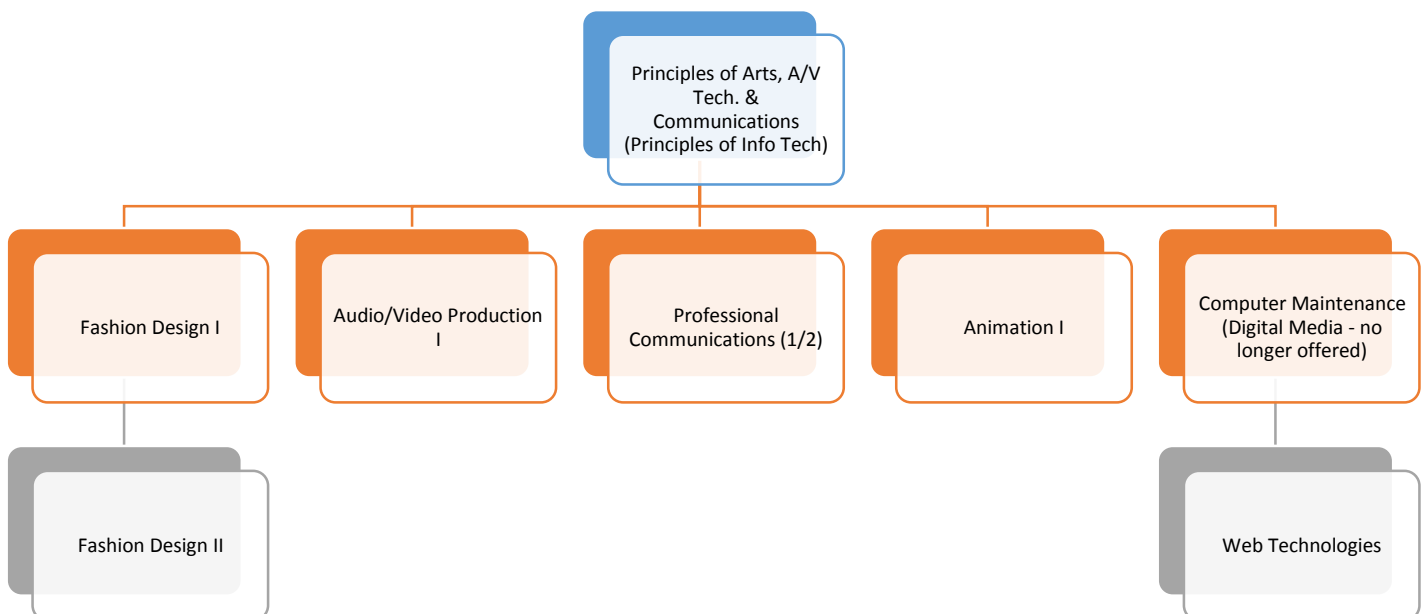


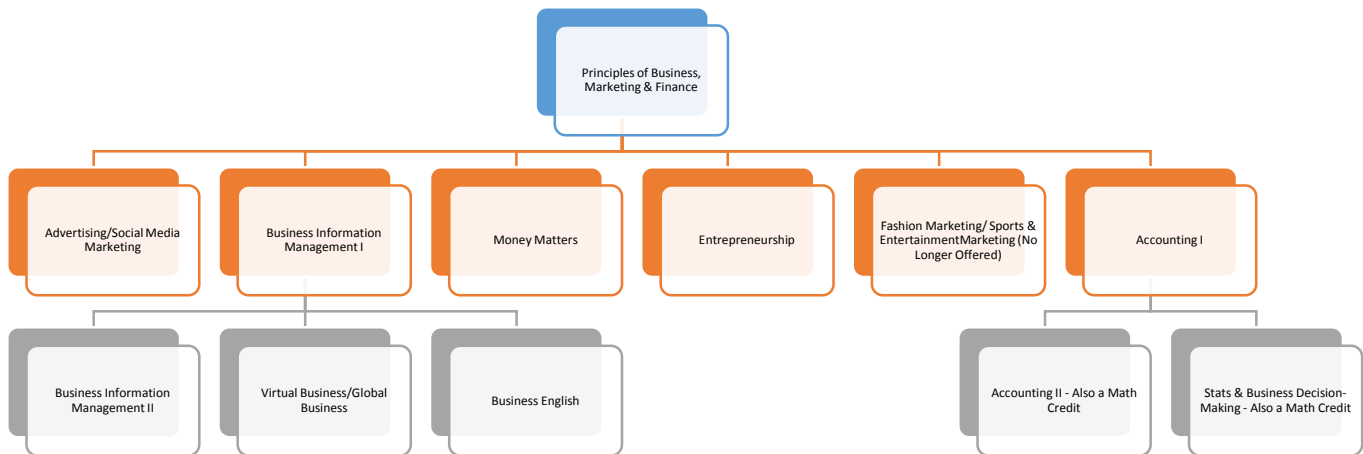
## AGRICULTURE, FOOD & NATURAL RESOURCES & MANUFACTURING: Business/Industry Endorsement



## Arts, A/V TECHNOLOGY & COMMUNICATIONS AND INFORMATION TECHNOLOGY: Business/Industry Endorsement



## Business Management & Administration, Marketing & Finance: Business/Industry Endorsement

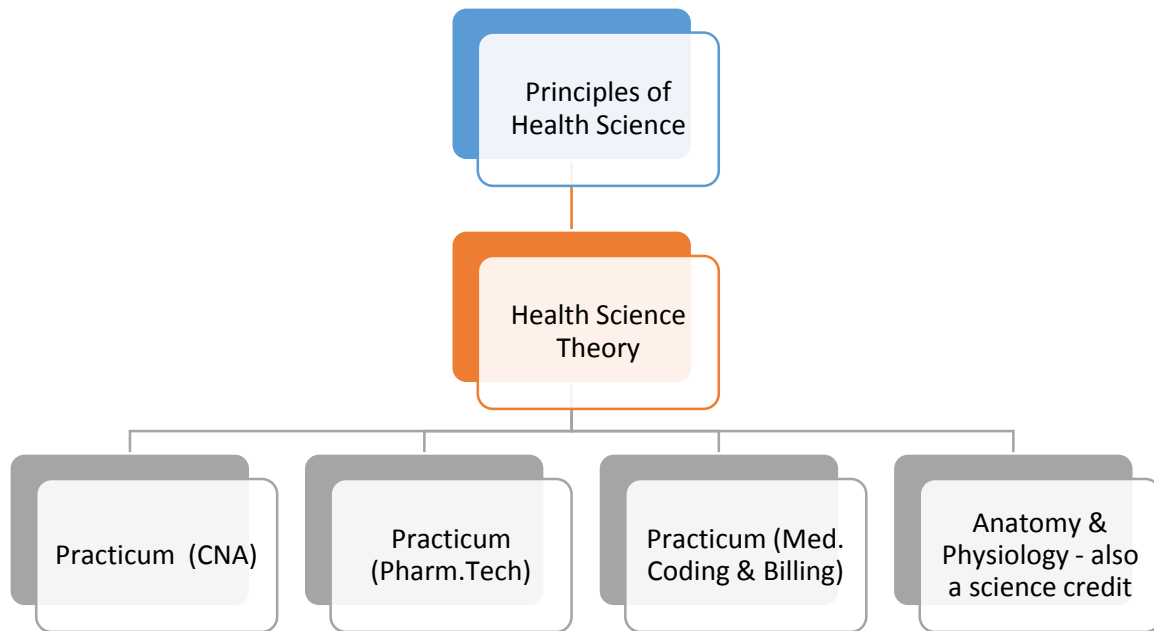


## EDUCATION & TRAINING: Public Service Endorsement



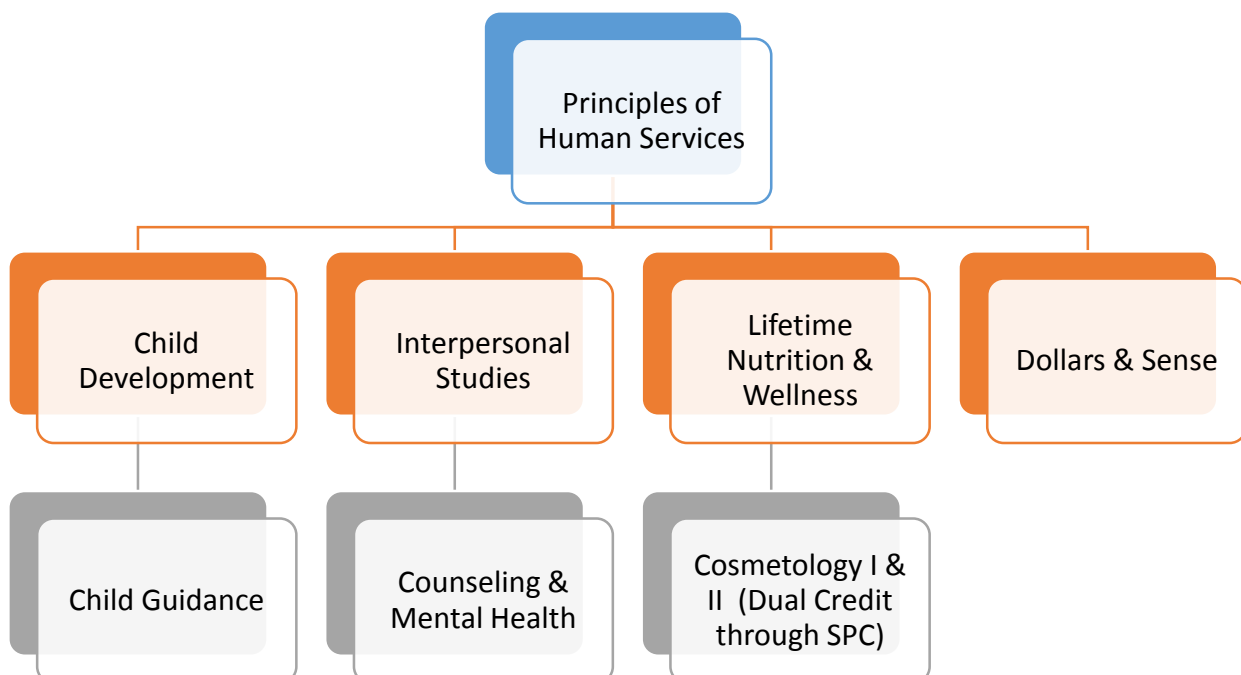
## HEALTH SCIENCE:

### Public Service Endorsement



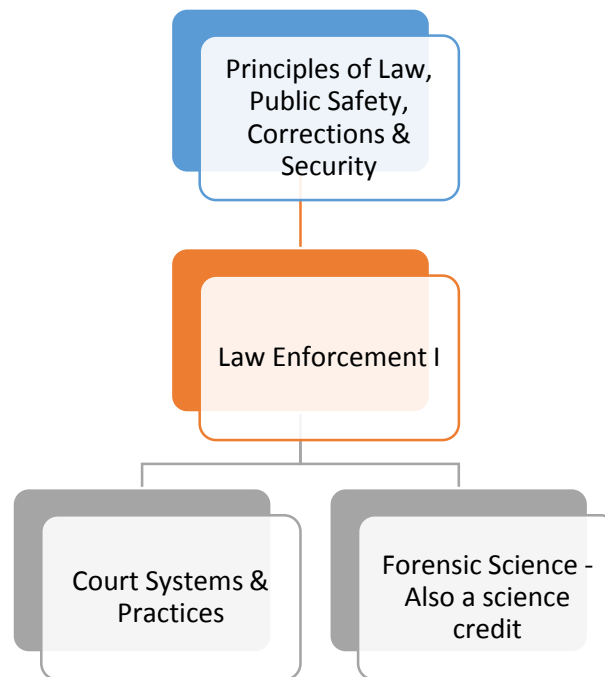
## HUMAN SERVICES:

### Public Service Endorsement

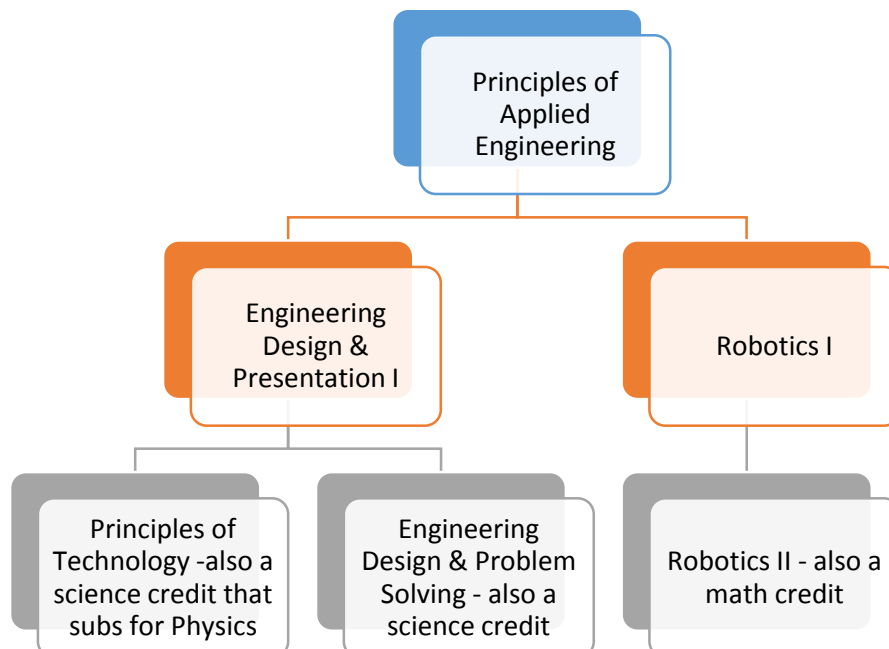


## LAW, PUBLIC SAFETY, CORRECTIONS & SECURITY:

### Public Service Endorsement



## SCIENCE, TECHNOLOGY, ENGINEERING & MATHEMATICS: STEM Endorsement



## TRANSPORTATION, DISTRIBUTION & LOGISTICS:

### Business/Industry Endorsement

A graphic consisting of two overlapping rounded rectangles. The front rectangle is white with a thin grey border and contains the text 'Dual Credit Auto Tech through SPC\*'. The back rectangle is a solid grey color.

## Dual Credit Auto Tech through SPC\*

- No required prerequisites, but one of the following sequences are recommended for 9<sup>th</sup> and 10<sup>th</sup> grade electives:
  - Principles of AFNR – Agricultural Structures: Design & Fabrication
  - Principles of Business, Marketing & Finance – Entrepreneurship or Human Resource Mgmt/Touch Systems Data Entry
  - Principles of Manufacturing – Intro to Welding
- If a student takes one of the above sequences, then decides not to pursue the dual credit auto tech option, they may earn 2 more credits from the cluster chosen or substitute Career Prep/Extended Career Prep to complete their endorsement.